



2015 Viking 62 Convertible

Boat Type: Sport Fishing

Address: Naples, FL, US

Price: \$2,995,000



OVERVIEW

“PENNY PERFECT” IS ONE OF THE MOST HIGHLY CUSTOMIZED 62 VIKINGS EVER BUILT. SHE IS POWERED BY TWIN CATERPILLAR C-32 ACERTS (1925HP), TWIN GENERATORS, BUC BLUE PAINTED HULL, FULL TEAK IN THE COCKPIT INCLUDING THE MEZZANINE, COCKPIT SOLE, FULL COVERING BOARDS, AND FAUX TEAK TRANSOM. SHE HAS THE PREFERRED 3 STATEROOM LAYOUT WITH ISLAND GALLEY AND GEORGIOUS RANDOM TEAK WITH THE HIGH GLOSS FINISH. HER ELECTRONICS AND TOWER PACKAGES ARE UNRIVALED AND NO DETAIL HAS BEEN OVERLOOKED. THE ORIGINAL BUILD ORDER FROM VIKING, AME ELECTRONICS, AND PALM BEACH TOWERS ARE ATTACHED AND FORMATTED IN THE FULL SPECIFICATIONS SECTION OF THE LISTING.

SPECIFICATIONS

Basic Information

Manufacturer:	Viking	Vessel Name:	Penny Perfect
Model:	62 Convertible	Boat Type:	Sport Fishing
Year:	2015	Hull Material:	Fiberglass
Category:	Power	Hull Type:	
Condition:	Used	Hull Color:	
Location:	Naples, FL, US	Designer:	
Available for sale in U.S. waters:	Yes	Flag of Registry:	

Dimensions & Weight

Length:	62 ft - 18.9 meter	Draft - max:	5 ft 2 in - 1.58 meter
LOA:	62 ft - 18.9 meter	Bridge Clearance:	-
Beam:	18 ft 11 in - 5.77 meter	Dry Weight:	-

Engine

Make:	Caterpillar	Engine Type:	Inboard
Model:	C-32 Acert	Drive Type:	
Engine(s):	2	Fuel Type:	Diesel
Hours:	1300	Horsepower:	1925 (Individual), 3850 (combined)
Cruise Speed:	-	Max Speed:	-
Range:	-	Joystick Control:	No

Tank Capacities

Fuel Tank:	2150 gallons - 1 tank(s)	Holding Tank:	152 gallons - 1 tank(s)
Fresh Water Tank:	310 gallons - 1 tank(s)		

Accommodations

Total Cabins:	3	Crew Cabins:	-
Total Berths:	-	Crew Berths:	-
Total Sleeps:	-	Crew Sleeps:	-
Total Heads:	3	Crew Heads:	-
Captains Cabin:	No		

DESCRIPTIONS

Vessel Description

- FWD SR LAYOUT: ISLAND QUEEN BUNK FORWARD
- LAYOUT: THREE STATEROOM LAYOUT
- LAYOUT: GLOSS FINISH THROUGHOUT
- ENG RM: S&I 1400 GPD WATERMAKER WITH AUTO BACKFLUSH
- ENGINE ROOM CUSTOM: S & I ADDITIONAL 21.5 KW GENERATOR
- HULL: ADDITIONAL FUEL TANK FORWARD FOR A TOTAL OF (3) TANKS
- FB: ELECTRONIC TROLLING VALVES
- FB: RECESSED ELECTRONICS BOXES
- FB: INSTALL BRIDGE FREEZER BOX
- JUMPSEAT BACKREST

- FB: REFRIGERATE BRIDGE DRINK BOX
- FB: CATERPILLAR SINGLE LEVER CONTROLS
- FB: S&I RELEASE TEAK HELM POD
- COCKPIT: REFRIGERATED COCKPIT STEP BOX
- CP: REFRIGERATE PORT MEZZANINE UNDERMOUNTED STEP BOX
- COCKPIT: CRUISAIR "COOL BREEZE" MEZZANINE AIR SYSTEM
- COCKPIT: PLUMB TRANSOM BOX AS LIVE WELL WITHOUT WINDOW AND LIGHT
- DECK/EXT: BOW PULPIT
- DECK/EXT: LEWMAR V4 SS WINDLASS (GYPSY AND DRUM)
- DECK/EXT SALON FORWARD WINDOW MASK
- HULL: DC BOW THRUSTER
- HULL: HULL COLOR TO BE BUCK BLUE
- HULL: BOTTOM PAINT VIKING BLUE
- GALLEY: ADDITIONAL UNDERCOUNTER REFRIGERATOR with DRAWERS
- SALON: CARPET RUNNER, FULL, CANVAS
- SALON: CARPET RUNNER, PARTIAL, CANVAS
- SALON: COCKTAIL TABLE
- SALON: BOSE V35 ENTERTAINMENT SYSTEM WITH BLU-RAY
- COMPANIONWAY, COSTA, CANVAS CARPET RUNNER W/ STEP COVERS
- FSR: S&I 19" FLAT SCREEN TELEVISION
- FSR: S&I 12VOLT CD/STEREO/DVD PLAYER
- MSR: S&I SAFE UNDER LIFT UP BED TOP
- PORT SR: S&I 12V STEREO/CD/DVD PLAYER
- PSR: S&I 19" FLAT SCREEN TELEVISION
- DECOR: APPLIQUED BEDSPREAD AND SHAMS IN MASTER STATEROOM
- DECOR: PRESTIGE DECOR
- DECOR: ACCESSORY KIT
- DELIVERY: PROPELLERS, SPARE (2) INCLUDES PROP SMITH
- DELIVERY: WATER DELIVERY KIT W/TOOL SET
- POWER: CATERPILLAR C32A: 1925 MHP
- ENG RM: GENERATOR GAS-WATER SEPARATORFOR STD GENERATOR
- ENG RM: AWLGRIP BRASS THRU-HULLS & SEA STRAINERS IN ENGINE RM & FWD BILGES
- ENG RM: FUEL FILTERS SNOW WHITE
- ENG RM: RUN LINE FROM OIL CHANGE SYSTEM TO COCKPIT DOCKSIDE BOX
- ENG RM: BACK-UP FUEL TRANSFER PUMP IN PARALLEL
- ENG RM: 110V OUTLET ON AFT BULKHEAD AT ENTRANCEWAY
- ENG RM: S&I CLEAR ACRYLIC SHAFT LOG ACCESS COVERS
- ENG RM: INSTALL TWO TOOL BOXES IN ENGINEROOM 4 DRAWER 12" WIDE PAINTED WHITE
- ENGINE ROOM CUSTOM: 120V** BACK UP FRESHWATER PUMP
- HULL: OVAL EXHAUST OUTLETS (LINEAR EXHAUST)
- HULL: FIBERGLASS SIDE THRU-HULLS
- HULL: PROP POCKETS TO REDUCE DRAFT
- HEADS: HEADHUNTER HEAD SYSTEM
- MECH: INSTALL TEE IN DOCKSIDE WATER MANIFOLD TO FILL WATER TANK FROM COCKPIT
- GENERAL: PROVIDE OVERBOARD DISCHARGE FOR ALL HEADS
- HULL: INSTALL SEAKEEPER GYRO
- BILGE: AWLGRIP FORWARD BILGE AND ANCHOR LOCKER
- BILGE: AWLGRIP ANCHOR LOCKER
- BILGE: INSTALL MAGNETIC SWITCHES FOR ALL BILGE LIGHTS
- FB: PUSH BUTTON CATCHES FOR ELECTRONICS BOXES
- FB: FRESH WATER OUTLET ON BRIDGE
- FB: INSTALL BRIDGE WITHOUT EXPOSED FASTENERS
- FB: PROVIDE DEDICATED FW FEED FOR TOWER W/LABELED SHUTOFF VALVE IN FWD FB LOCKER
- FB: SINGLE LEVER CONTROL HANDLES W/BOW THRUSTER BUTTON IN HANDLES
- FB: INSTALL RELEASE MARINE HELM CHAIRS
- FB: S&I HANDRAIL ON SIDE OF HELM CONSOLE ABOVE HELM ACCESS DOOR
- FB: CUSTOM: SPLIT RADIO BOX LIDS-MW
- FB: CUSTOM: S & I REMOTE CONTROL PANEL FOR WATERMAKER ON BRIDGE
- FB: CUSTOM: RELEASE MARINE STEERING WHEEL AND CONTROL HANDLES WITH B/T BUTTONS
- COCKPIT: MEZZANINE COCKPIT
- COCKPIT: TRANSOM SWIM STEPS
- COCKPIT: CRUSHED ICE MACHINE WITH DISCHARGE IN STBD MEZZANINE BOX
- COCKPIT: AWLGRIP LAZARETTE
- COCKPIT: Y-VALVE FOR FRESH AND SALT WATER WASHDOWNS IN COCKPIT

- COCKPIT: TRANSOM COAMING SOLID WITH FISH BOX
- CP: COCKPIT FREEZER BAIT TRAYS
- CP: TEAK COCKPIT SOLE
- CP: PROVIDE FREEZER STORAGE IN MEZZANINE SEAT
- CP: STORAGE LOCKERS UNDER PORT AND STARBOARD COAMINGS
- CP: BLUE LED ROPE LIGHTING UNDER COCKPIT COAMING
- CP: SPLIT LID FOR COCKPIT FISH BOX
- COCKPIT CUSTOM: INSTALL BLUE AND WHITE LIGHTS IN COCKPIT OVERHANG
- COCKPIT CUSTOM: S & I 12V OUTLETS FOR LP REELS-MW
- COCKPIT CUSTOM: TEAK COCKPIT, MEZZANINE COAMINGS
- COCKPIT CUSTOM: CRUSAIR "COOL BREEZE" MEZZANINE AIR SYSTEM
- COCKPIT CUSTOM: INSTALL BLUE AND WHITE ROPE LIGHTS IN COCKPIT
- COCKPIT CUSTOM: TEAK COVERING BOARDS
- COCKPIT CUSTOM: INSTALL TUNA IN TRANSOM BOX; 4 SMALL AND 4 LARGE RUNNING OFF
- CENTRALIZED SEAWATER SYSTEM
- DECK/EXT: FRESH WATER WASHDOWN AT BOW INSIDE ANCHOR LOCKER
- DECK/EXT: ALL ALUMINUM TO BE POLISHED IPO BRUSHED
- DECK/EXT: CUSTOM LINE-CHAIN COMBINATION: 50' OF CHAIN, 500' ROPE
- DECK/EXT: S&I RECESSED TRIM TAB COVERS
- DECK/EXT: INSTALL SS GAS SPRINGS FOR ANCHOR LOCKER HATCH
- DECK/EXT: SIDE MOUNTED HANDRAILS THAT FOLLOW TOP OF SALON WINDOW
- HULL: CUSTOM NON-METALLIC BOOT STRIPE IPO STANDARD SINGLE STRIPE
- DECK/EXT CUSTOM: S & I GALVANIZED BRUCE ANCHOR 30 KILO
- DECK/EXT CUSTOM: COSTA COVER FOR BLACK MASK
- GALLEY: 110V OUTLET NEXT TO SWITCH ON BOTTOM OF UPPER CABINET ABOVE SINK
- GALLEY: SINK TO BE STAINLESS STEEL UNDERMOUNT
- GALLEY: CUSTOM AMTICO FLOORING IN GALLEY AROW #7910 BRUSHED OAK, AROD #6000 HERRINGBONE
- GALLEY: CUSTOM GALLEY COUNTERTOP
- GALLEY: FAUCET TO BE SATIN NICKEL
- GALLEY: MIRROR BACKSPLASH
- GALLEY CUSTOM: INSTALL RECESSED COOK TOP IPO STD SURFACE MOUNT
- GALLEY CUSTOM: COUNTERTOP TO BE CAESARSTONE #5220 DREAMY MARFIL; POLISHED WITH OGEE EDGE
- GALLEY CUSTOM: INSTALL TUFF MASS SOUND INSULATION MATERIAL UNDER AMTICO FLOORING
- SALON: SALON DOOR WITH ELECTRIC DOOR OPENER
- SALON: DIMMERS FOR QUARTZ LIGHTS
- SALON: WIRE BOX TO BE TEAK
- SALON: S&I TEAK TRIM WHERE AMTICO FLOOR MEETS CARPET
- SALON: CUSTOM AMTICO FLOORING AT SALONENTRANCEWAY AROW #7910 BRUSHED OAK, AROD #6000 HERRINGBONE
- DINETTE: DINETTE TABLE TO BE TEAK W/TEAK PEDESTAL
- SALON: VALANCES TO BE TEAK
- DINETTE: INSTALL AC RECEPTACLE UNDER DINETTE TABLE
- SALON: INSTALL 46" FLAT SCREEN TELEVISION
- DINETTE: DIMMER ON OVERHEAD LED LIGHTS
- SALON CUSTOM: INSTALL CROWN MOLDING IPO GIMP IN SALON, GALLEY AND DINETTE
- SALON CUSTOM: LOCATE BAR STOOLS BACK 2 ADDITIONAL INCHES FROM GALLEY ISLAND
- MSR: MATTRESS VIKING SLUMBER #8
- MSR: END TABLE TOPS TO BE TEAK
- MSR: S&I 32" FLAT PANEL TELEVISION
- MSR HEAD: TEAK FACE ON LOWER VANITY
- MSR HEAD: MIRROR AROUND UPPER VANITY INSERT
- MSR HEAD: CUSTOM AMTICO FLOORING AROW #7910 BRUSHED OAK, AROD #6000 HERRINGBONE
- MSH: SHOWER FIXTURES TO BE SATIN NICKEL
- MSH: TOWEL BARS & RINGS TO BE BRUSHED NICKEL
- MSH: FAUCET TO BE SATIN NICKEL
- MSR HEAD CUSTOM: VANITY TOP TO BE CAESARSTONE #5 220 DREAMY MARFIL; POLISHED WITH OGEE EDGE
- MSR CUSTOM: SCONCES
- MSR CUSTOM: INSTALL CROWN MOLDING IPO GIMP
- FSR: MATTRESS VIKING SLUMBER #6
- FSR HEAD: TEAK FACE ON LOWER VANITY
- FSR HEAD: MIRROR AROUND UPPER VANITY INSERT
- FSR HEAD: CUSTOM AMTICO FLOORING AROW #7910 BRUSHED OAK, AROD #6000 HERRINGBONE
- FSH: SHOWER FIXTURES TO BE SATIN NICKEL
- FSH: TOWEL BARS AND RINGS TO BE BRUSHED NICKEL

- FSH: FAUCET TO BE SATIN NICKEL
- FSH: CUSTOM ONE PIECE FRAMELESS SHOWER DOOR
- FWD HEAD CUSTOM: COUNTERTOP TO BE CAESARSTONE #52 20 DREAMY MARFIL; POLISHED WITH OGEE EDGE
- FSR CUSTOM: INSTALL CROWN MOLDING IPO GIMP
- PSR: DIMMER ON OVERHEAD LED LIGHTS
- PORT STRM: MATTRESS VIKING SLUMBER #6
- PORT HEAD: TEAK FACE ON LOWER VANITY
- PORT HEAD: CUSTOM AMTICO FLOORING AROW #7910 BRUSHED OAK, AROD #6000 HERRINGBONE
- PORT HEAD: S&I CHROME SHOWER DOOR
- PORT HEAD: S&I SATIN NICKEL SHOWER FIXTURES
- PSH: BRUSHED NICKEL TOWEL BARS & RINGS
- PORT HEAD: FAUCET TO BE SATIN NICKEL
- PORT HEAD CUSTOM: VANITY TOP TO BE CAESARSTONE #5220 DREAMY MARFIL; POLISHED WITH OGEE EDGE
- DECOR: SALON DOOR TYPE CATCHES ON STATE ROOM DOORS
- DECOR: SOFA, UPGRADED STYLE
- DEWBERRY IN ULTRALEATHER BRISA #303-3051 GINGER; WITH STORAGE ARM
- DECOR: WRAPPED HATCH CARPET INSTALLATION
- DECOR: CUSTOM WALLPAPER MATERIAL
- DECOR: CUSTOM WALLPAPER INSTALLATION
- DECOR: CUSTOM HEADLINER MATERIAL THROUGHOUT BOAT DESERT SAND SYMPHONY (INCLUDING HULL SEALERS AND COMPANIONWAY
- DECOR: BRUSHED NICKEL HARDWARE THROUGHOUT
- DECOR: BRUSHED NICKEL COVERPLATES FOR SWITCHES & RECEPTACLES THROUGHOUT
- DECOR: SATIN NICKEL INTERIOR LIGHT TRIM THROUGHOUT
- DECOR: LED INTERIOR LIGHTS THROUGHOUT
- DECOR: INTERIOR DOORS STILE & RAIL RANDOM TEAK
- DECOR: CARPET THROUGHOUT; FABRICA. PATINA NOVE
- DECOR ITEM: HELM AND COMPANION CHAIRS IN ULTRALEATHER BRISA DISTRESSED OUTDOOR

#396-3134 BUCKSKIN

- DECOR ITEM: BRIDGE CUSHIONS: IN ULTRALEATHER BRISA DISTRESSED OUTDOOR

#396-3134 BUCKSKIN

- DECOR ITEM: MEZZANINE CUSHIONS IN ULTRALEATHER BRISA DISTRESSED OUTDOOR #396-3134 BUCKSKIN WITH INSERT IN 773 MANDELA OCEAN BOLSTER ULTRALEATHER BRISA DISTRESSED OUTDOOR #396-3134 BUCKSKIN
- DECOR ITEM: BARSTOOLS (2) WITHOUT BACKS IN ULTRALEATHER BRISA #303-3051 GINGER
- DELIVERY: SPARE PROPELLERS IN PROPELLER STORAGE BOXES (2)
- RELEASE MARINE TRILLION SERIES FULL TUNA CHAIR

Atlantic Marine Electronics package rigged at the factory during construction. The Penny Perfect has a state of the art electronics package with attention to every detail. The following is from the build order for the boat:

RADAR:

RADAR FURUNO FR2127BB/DC 25KW W/ 42RPM GEARBOX W/ RCU15 CONTROL

FURUNO XN20AF/6.5 RADAR W/6.5" ARRAY

CABLE ASSY 30M FAR2127 PROC-CONT

FURUNO PG500R HEADING SENSOR RATE COMPENSATED

FURUNO GP330B GPS ANTENNA

KEP 17" LED GLASS BRIDGE MARINE MONITOR

ATLONA AT-DVI15SRS DVI EXTENDER

EXTRON 4 PORT DVI DISTRIBUTION AMP

PLOTTER:

(2) GARMIN GPSMAP8530 BLACK BOX SYSTEM

PRELOADED CHARTS

GARMIN 40#39; NETWORK CABLE

GARMIN GNT 10 N2K TRANSCEIVER

GARMIN GMS10 NETWORK EXPANDER

GARMIN WIFI ADAPTER FOR BLUECHART MOBILE

GARMIN REMOTE INPUT DEVICE - GRID

GARMIN AIS-600 AIS TRANSPONDER

(2) KEP 17" LED GLASS BRIDGE MARINE MONITORS

(2) ATLONA AT-DVI15SRS DVI EXTENDERS

EXTRON 4 PORT DVI DISTRIBUTION AMP

GARMIN GXM52 WEATHER ANTENNA

PLOTTER2:

GARMIN GPSMAP8208 - 8" TS MFD PRELOADED WITH COASTALS CHARTS

(MOUNT IN DROP-DOWN BOX)

NETWORK:

(8) MARETRON CM MICRO TEE MALE/FEMALE/FEMALE

(5) N2K MID DOUBLE-ENDED CORDSET 2M GRAY

(3) N2K MID DOUBLE-ENDED CORDSET 3M GRAY

(2) N2K MICRO TERMINATION RESISTOR MALE

MICRO BULKHEAD FEED THRU MHF-CM

(40) MARETRON DG1 N2K MID BULK CABLE GRAY

(5) MARETRON FA-CF-ST FEMALE NMEA CONNECTOR

MARETRON FA-CM-ST MALE NMEA CONNECTOR

PULS DC/DC 96W 18-32VDC IN VDC CONVERTER

MARETRON CM-CF-4 NMEA MULTIPORT BOX

SOUNDER:

GARMIN GSD-26 CHIRP VIDEO SOUNDER MODULE

AIRMAR CM599LHW 2-3 KW TRANSDUCER

28KHZ-60KHZ/130KHZ-210KHZ-WIDE BEAM

SOUNDER 2:

FURUNO FCV1200BB SOUNDER W/LANDSCAPE CONTROL

TRANSDUCER FRP 28KHZ FURUNO CA28BL-6HR

FURUNO CA200B-8B 2KW 200KHZ TRANSDUCER

ATEN VS94A 4 PORT VGA SPLITTER

(4) EXTRON 15' MALE-MALE VGA CABLE #26-23

DIGITAL DEPTH/TEMP:

FURUNO RD33 DATA ORGANIZER & DISPLAY INC

FURUNO 235DHTLMSE HI-PRECTMP2 TRANSDUCER INC

AUTOPILOT:

SIMRAD AC12 AUTOPILOT COMPUTER

AUTOPILOT CONTROL UNIT SIMRAD AP24

RUDDER FEEDBACK SIMRAD RF25 W/ 5M SIMNET

SIMRAD RC42 RATE COMPASS W/AAC 22090195

SIMRAD AUTOPILOT INSTALLATION KIT

VHF:

(2) VHF RADIO STANDARD QUANTUM GX5500S INSTALL IN DROP DOWN BOX

(2) STANDARD MIX EXTENSION KIT INC

(2) SHAKESPEARE PHASEIII6018 18' VHF ANTENNA ANTENNAS TO HAVE BLACKED OUT OPTION ON THE BUGGY TOP AREA.

(2) AME TOWER/HARDTOP RUPP MOUNT PAK

ICOM IC-M604 BLACK VHF RADIO INC

USE LMR240 CABLE BETWEEN RADIO AND ANTENNA TO ENHANCE PERFORMANCE

STEREO:

FUSION MS-IP700i STEREO

FUSION MS-IP700i DROP CABLE

APPLE AIRPORT EXPRESS WAP MC414LL/A

FUSION MS-ACSXV-ONLY SIRIUS/XM TUNER

SHAKESPEARE-SRA-40 SIRIUS ANTENNA

FUSION BLUETOOTH DONGLE BT100 VIA AUX RCA; NO ONSCREEN DATA ON RADIO

AUDIO SELECTOR SWITCH, SIMA SVS14

JL AUDIO MHD600/4 4-CHAN AMPLIFIER

(2) JL AUDIO 7.7" WHITE COAXIAL SPEAKERS M770-CCX-CG BRIDGE

SATCOM:

SATELLITE PHONE KVH V7 TRACPHONE

APC BE650G UPS

RADAR SATELLITE ANTENNA POD 28" ROUND MOLD 182

STINGER RINGER MODEL196 LINE PWRD PHONE ON/OFF SWITCH INCLUDED MOUNT OVERHEAD IN TEASER REEL BOX

ROUTER PAKEDGE K6

IRIDIUM IRID-BM-9555PD DOCKING STATION

POTS CAPABILITY

BEAM RST710 SATPHONE ANTENNA

PANASONIC 2-LINE CORDLESS PHONE KX-TG9381T

(3) ADDITIONAL HANDSETS FOR KXTG9381T PHONE

(ENGINE ROOM, BRIDGE, MASTER STATEROOM)

HP 6600 ALL-IN-ONE PRINTER/SCANNER/COPIER/FAX

PAKEDGE W6 WIRELESS ACCESS POINT

PAKEDGEPI-04 POE INJECTOR

PAKEDGE S8W 8-PORT ETHERNET SWITCH

KVH UHC-250 FAX SERVER 19-0520

CAMERA:

(3)GOST PM-MINI IR BALL CAMERA (ENGINE ROOM, COCKPIT, SALON)

COLOR QUAD CAMERA SWITCH W/ ZOOM APP

3V DUAL COMP VID AMP 2 IN 3 OUT MDA

THERMAL IMAGING:

FLIR M625L DUAL PAYLOAD THERM/LOW LIGHT

AME FLIR M-SERIES HARDTOP MOUNT

VIDEO DIST AMP MDA 5V COMPOSITE VIDEO 1 X 5 WITH INPUT LOOP THRU, EXTRON

VIDEO DIST AMP MDA 5V COMPOSITE VIDEO 1 X 5 WITH INPUT LOOP THRU, EXTRON

VIEW VIS/IR CAMERA ON HELM DISPLAYS AND SALON TV

PLOTTER ETHERNET SWITCH ADAM-6520

FLIR POWER OVER ETHERNET INJECTOR

SPOTLIGHT:

ACR RCL100 24V SPOTLIGHT

SATTV:

KVH TV6 W/IP ENABLED TV-HUB B

RADAR SATELLITE ANTENNA POD 28" ROUND MOLD 182

SATTV MULTI SWITCH SPAUN SMS5603NF

SALON:

URC MX-5000i REMOTE CONTROL

URC MRF-350i REMOTE CONTROL BASE

APPLE TV DIGITAL MULTIMEDIA RECEIVER MD199LL/A

SENNHEISER RS120 WIRELESS RF HEADPHONES

ATLONA AT-HD560 SCALER

APC BE650G UPS

TV LIFT IR KIT

NILES A/V AMPLIFIER AUDIO/VIDEO AVDA-3

MSR:

URC MX-980i REMOTE CONTROL

BASE STATION URC MRF-350i

1BLU-RAY PLAYER SONY BDP-S3100

FWD STATEROOM:

IR REPEATER KIT W/SENSOR, SNAP AV

IR CONTROL FOR SATTV RECEIVER

PORT STATEROOM:

IR REPEATER KIT W/SENSOR, SNAP AV

IR CONTROL FOR SATTV RECEIVER

TOWER:

GARMIN GPSMAP8208 - 8" TS MFD PRELOADED WITH COASTALS CHARTS

AUTOPILOT CONTROL UNIT SIMRAD AP24

VHF RADIO STANDARD QUANTUM GX5500S

STANDARD CMP30BLK VHF RAM MIC

(2)STANDARD CT-100 RAM MIC EXT CABLE

SHAKESPEARE PHASEIII 6400 4' VHF ANTENNA

TOWER CONTROL BOX TO HAVE TEASER REEL REMOTE PANEL

COCKPIT:

JL AUDIO 2 CHANNEL AMPLIFIER M200/2

JL AUDIO 7.7" COMPONENT SPKR M770-TCS-CG

M770-TCS-CG-WH

INSTALL IN CUSTOM BOX UNDER COCKPIT COMBING

FACTORY SPEAKERS TO BE RELOCATED TO THE ENGINE ROOM

FUSION MS-NRX200i WIRED REMOTE COCKPIT HAUNCH

STEREO 12V ZONE AMP FUSION MS-AM702

CONNECT TO EARTEC WIRELESS MIC SYSTEM

POLY PLANAR MA9020 STEREO SPEAKER(WHTBX)

CONNECT TO EARTEC SYSTEM

MISC:

SPLIT LIDS ON RADIO BOXES

LUMISHORE TIX801-CCP-FF-2 COLOR (OUT TRANSOM)

(2) LUMISHORE TIX801-CCP-FF COLOR CHANGE SINGLE FF UNDERWATER LIGHT

(ONE LIGHT OUT EACH SIDE)

(2) LUMISHORE TIX801-CCP-FF COLOR CHANGE (2- OUT BOTTOM)

(4) LUMISHORE 5M DMX EXTENSION CABLE

ENTTEC ODE MODULE 70305

BLUE CHART SOUTHWEST CARIBBEAN USO31R GA

GARMIN SOUTHEAST CARIBBEAN VUS030R CHART

CHART, GARMIN G2 VISION, SA WEST COAST

"CARBON FIBER" APPLLICATION MATERIAL- HELM AND TOWER HELM PANEL, INTERIOR OF RADIO BOXES, INSIDE INSERT BOXES OF TOWER CONTROL BOX

Palm Beach Towers Package:

The Penny Perfect is fully outfitted 8' Gap tower with all of the extras imaginable. The following is the actual build sheet from PBT when the boat was built:

Tuna Tower w/Molded Top 62' Convertible 8' Gap, Polished Pipe

(2) Antenna, Stands-offs, No Halyards, 3 Sided Track on Bimini rail

Lumitec Mirage tri color LED lights w/ Fiberglass recess (blue, white, & red)

Radar Pod Large Oval Style, Mold #973 w/Sliding Door for Teaser Reels

Molded Standing Platform w/ Coupler Box on Platform

Molded 2-in-1 24V LED Light Pod w S/S Bezel

Molded 24V LED Light Fwd Platform S/S Bezel

Control Box 63" w/Flush Mounted compass

Recessed Electronics box with lid

Control box cover

Paint top of control box satin black

Tower Sunshade Molded w/Internal Tracks, 5 Welded Antenna Mounts

Paint tower Sunshade frame Satin Black

Painted Undersides of Hardtop, Platform, and Tower Sunshade Atlantic Blue Satin.

Antenna Mount SAT V7 Dome hardtop fiberglass molded into radar pod

Bridge Rail, Leg to Leg, Double Aft to outer main leg

Rod Holder Polished Weld to Rail PBT Style

Rod Holder Polished Aft Legs 3-P-3-S PBT Style

Controls & Steering CAT Controls (no LCD readout)

U Shaped Safety Rail around Ladder Opening

43' Outrigger Rupp Bigg Riggs, HD 3 Spreader, Bridge Release, Large Solid Aft Bar Installed

Rigger Locks

Rupp rollers Installed on outriggers IPO eye bolts

Teaser Line collars

Install Outrigger Rupp

Center Rigger Rupp

Recessed Electric Teaser Reels MIYA EPOCH US9 HD R with remotes

Wire Teaser reel remotes to tower control box

Wash down Water in Tower

Flag Staff Aft

Stern Light Molded

Electronics Box Electric Fold Down

Rybo style wrapped belly band

Enclosure 3 sided Track to Track to Edge Jump Seat Backrest, EZ2CY

Air Vents Fwd Top Panels

Powder coated Aluminum Flangeless Track

(6) Tri color hardtop lights

Weld flag staff each side platform perimeter rail

Rupp Outrigger S/S Grommets mounted in cockpit gunnels

Lumitec Mirage (2) tri color LED Lights w/ fiberglass recess in sunshade top

(2) Lumitec Mirage tri color LED Lights underneath sunshade,

(2) Lumitec Mirage tri color LED Lights underneath platform

Welded teaser line grommets with inserts

S/S teaser line thru fittings underside of hardtop

Lumitec Mirage tri color LED Lights under platform w/ fiberglass recess

Upgrade tower FWD X brace, side diagonals, and hardtop brace to contour style

Upgrade fiberglass parts to be fabricated using carbon fiber material

Relocate Factory horns from under bridge brow to Radar Pod

Custom Sun fly Sunshade for Cockpit with Canvas

Custom Framework with for Full Cockpit Sunshade. Frame work

to go Aft, Rod Holder to Rod Holder with folding Knuckles at the Bases.

Full Cockpit Sunshade Canvas Cover with Zippered Pockets to PBT Pipe

Strataglass panel in front of helm with tracks

Cockpit cover- pins to transom, overhang track with removable Wing sections.

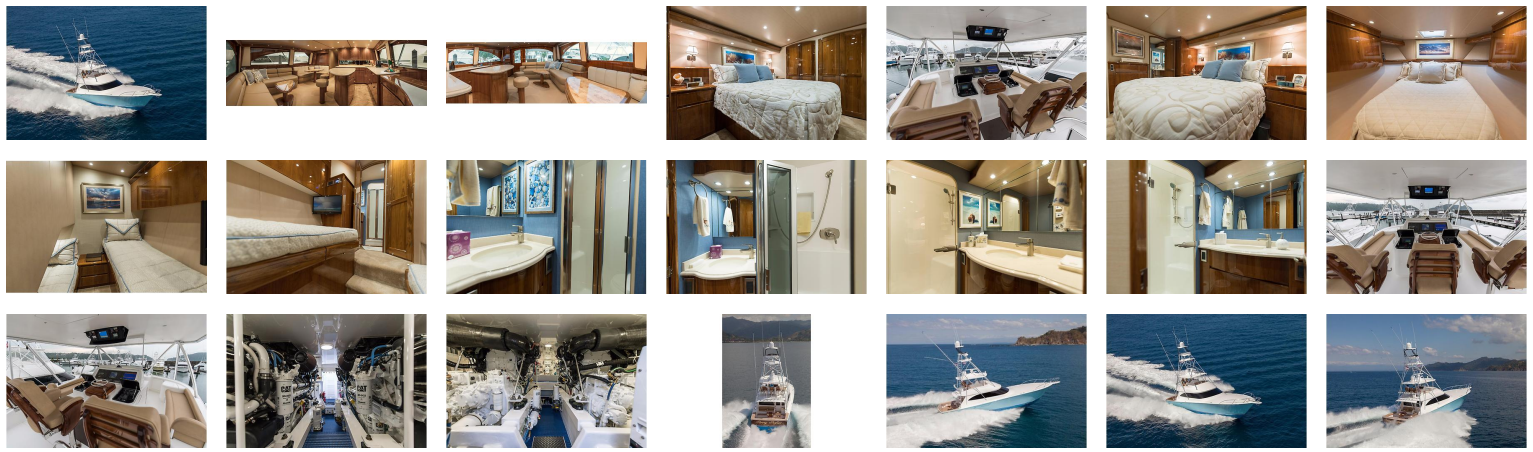
Exclusions

OWNERS PERSONAL EFFECTS INCLUDING TACKLE, TOOLS, CLOTHING, PAPER CHARTS, CAPTAINS PERSONAL ITEMS AND ANY ITEM NOT LISTED HERE IN AT TIME OF VIEWING. A COMPLETE EXCLUSIONS LIST TO BE PRODUCED WITHIN 5 DAYS OF AN EXECUTED CONTRACT.

Disclaimer

The Company offers the details of this vessel in good faith but cannot guarantee or warrant the accuracy of this information nor warrant the condition of the vessel. A buyer should instruct his agents, or his surveyors, to investigate such details as the buyer desires validated. This vessel is offered subject to prior sale, price change, or withdrawal without notice.

GALLERY



LOCATION MAP



STEVE SPRIGG
Sprigg Yacht Consulting
2525 Marina Bay Drive West Suite 105
Fort Lauderdale, FL, US
Office: 1-800-266-4432
Mobile: 2398256174
info@sycyachts.com

